

MY MELANCHOLY BLUES

Words and Music by
FREDDIE MERCURY

Molto Rubato

N.C.

Musical notation for the first system, including piano accompaniment and vocal line with a triplet.

Musical notation for the second system, including piano accompaniment and vocal line with lyrics "An-oth-er par-ty's o - ver".

Musical notation for the third system, including piano accompaniment and vocal line with lyrics "and I'm left cold so - ber. My ba-by left me for some-bo- dy new.".

Musical notation for the fourth system, including piano accompaniment and vocal line with lyrics "I don't want to talk a - bout it, want to for-get a - bout it, wan-na".

My Melancholy Blues - 4 - 1

Copyright © 1977 by Queen Music Ltd.

All rights assigned for the U.S.A. and Canada to Beechwood Music Corp., 6255 Sunset Blvd., Hollywood, Calif. 90028

This arrangement Copyright © 1978 by Beechwood Music Corp.

International Copyright Secured

Made in U.S.A.

All Rights Reserved

Slowly

E \flat (G Bass) Fm7 B \flat 7 E \flat

be in- tox - i- ca- ted with that spe- cial brew. So come and get me.

G7 A \flat Abm E \flat (G Bass) F \sharp dim 3

Let me get in that sink- ing feel- ing that says my heart is on an

Fm7 B \flat 7 E \flat

all time low. So don't ex - pect me

G7 A \flat Abm 3

to be - have per- fect - ly. And when that sun- ny smile

E \flat (G Bass) F \sharp dim Fm7

my guess is I'm in for a cloud - y and ov - er cast.

F \sharp dim E \flat (G Bass) Edim Fm Fm Fm7

Don't try and stop me 'cos I'm head - ing for that storm - y weath - er soon.

Ab Abm

I'm caus - ing a mild sen - sa - tion with this new oc - cu - pa - tion. —
with this new oc - cu - pa - tion. —

E \flat (G Bass) Gm Gm Cm

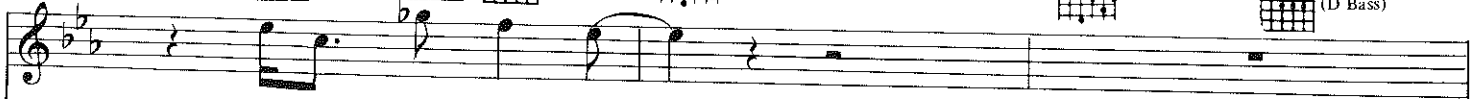
— I'm per - ma - nent - ly glued to this ex - tr'or - di - nar - y mood. So now move o -
— I'm in the news, I'm just get - ting used to my new ex - po -



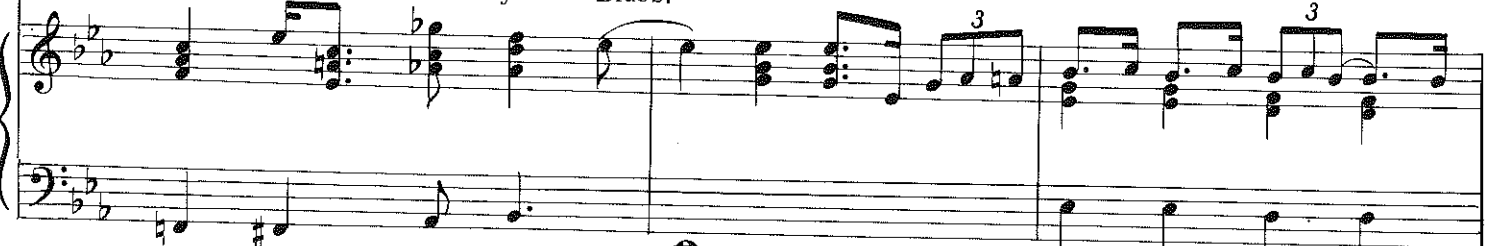
ver, _____ let me take _____ o - ver _____ with my
sure. _____ So come in - to _____ my en - clo - sure, _____ meet my



(D Bass)



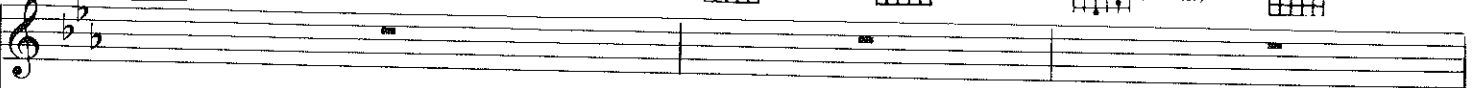
Mel - an - chol - y Blues.
Mel - an - chol - y Blues.



(Db Bass)



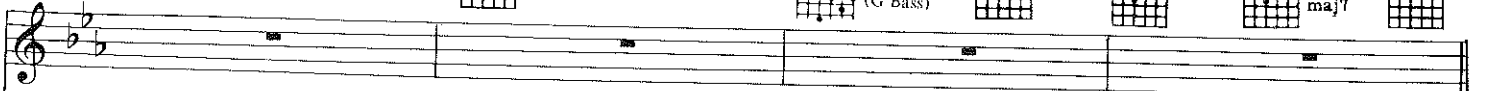
(G Bass)



(G Bass)



maj7



D.S. and fade